

Parking Regulations on City Streets

Laconia, NH

Introduction/Key

In an attempt to make this document complete, section numbers and ordinance numbers are included. Section numbers, based on the Public Ordinances of 1975 and its 1988 supplement, were no longer assigned after 1988. Ordinance numbers were no longer assigned after 1996. Different fonts are used to help orient the reader. ~~Text with strikethrough indicates the ordinance has been replaced or repealed.~~ *Words written in italics are intended to clarify; they do not appear in the original ordinance.*

Street Name	Chapter 50 Article V Section #	Ordinance # (or source document)	Counsel Action Date	Comments
Academy Street	1	19-78-7 227-92-19	11/27/78 11/17/92	
Arch Street	2	Public Ordinances of 1975		Minor issue--clarity
Avery Street	3	Public Ordinances of 1975		
Baldwin Street	4	Public Ordinances of 1975 263-95-2	2/13/95	Minor issue--overlap
Beacon Street	5	256-94-14	6/13/94 10/27/03 6/28/04	Adjust for parking redesign in 2019
Belknap Street	60	7-77-2 9-77-4	5/31/77 8/29/77	
Bisson Avenue	6	Public Ordinances of 1975		
Bowman Street	7	Public Ordinances of 1975		
Bridge Street	67	36-80-5 80-83-5	4/29/80 8/29/83	
Canal Street	8	Public Ordinances of 1975 154-88-8	5/31/88	
Carver Street	65	25-79-5	8/27/79	
Centenary Ave	71	83-83-8 Memo of 9/26/16	9/26/83	
Chestnut Street	62	15-78-3	5-29-78	
Church Street	9	Public Ordinances of 1975 22-79-2 23-79-3 50-81-4 169-89-4 249-94-7	5/28/79 6/25/79 7/27/81 7/31/89 3/14/94 5/24/04 11/28/05 11/13/06 7/10/17	Numerous corrections
Clairmont Street	10	Public Ordinances of 1975		
Clark Avenue	73	140-87-7	8/31/87	
Cleveland Place			6/12/00 8/14/00	Private Road

Street Name	Chapter 50 Article V Section #	Ordinance # (or source document)	Counsel Action Date	Comments
Clinton Street	11	Public Ordinances of 1975 217-92-9	7/13/92 1/28/19	
Cook Court	12	Public Ordinances of 1975 71-82-10	10/25/82	
Court Street	13		3/26/18	
Daisy Gardner Road			4/8/19	
Davis Place	15	Public Ordinances of 1975		15a(1) should be repealed
Depot Street	82	256-94-14	6/13/94	See Veterans Square
Dewey Street	16	Public Ordinances of 1975		
Dixon Street	68	45-80-14	10/27/80	
Doe Avenue	17	Public Ordinances of 1975		
Elliott Street	18	Public Ordinances of 1975		
Elm Street	19	100-85-13	2/25/85 9/24/18	Numerous corrections
Fair St	77	160-88-14	8/29/88	
Fairmont Street			8/12/19	
Folsom Street	58	1-76-1	2/23/76 9/24/18	
Franklin Street	20	29-79-9	11/26/79	
Gale Avenue	69	172-89-7	10/30/89	
Garfield Street	21	163-88-17	11/28/88	
Gilford Avenue	22	Public Ordinances of 1975 41-80-10 95-84-9	7/28/80 1/26/84 8/24/98 9/14/98	
Grove Street	23	Public Ordinances of 1975		Ordinance should be repealed.
Hanover Street (aka Cross Street)	24	Public Ordinances of 1975		
Harrison Street	25	Public Ordinances of 1975		
Harvard Street	26	Public Ordinances of 1975		Minor issue--building number
High Street	27	263-95-2	2/13/95 9/10/01 4/11/05 5/14/18	
Highland Street	70	82-83-7	9/26/83 8/9/10	
Hill Street	74	143-87-10	10/26/87	
Howard Street	28			
Jackson Street	29			
Jefferson Street	61	8-77-3	8/29/77	
Jewett Street	30	Public Ordinances of 1975		

Street Name	Chapter 50 Article V Section #	Ordinance # (or source document)	Counsel Action Date	Comments
Lakeside Avenue (Weirs Beach)	31	Public Ordinances of 1975 50-81-4 167-89-22 168-89-3 13-92-5	7/27/81 4/25/89 7/31/89 5/11/92 8/14/17	Adjust for parking redesign in 2016.
Lane Road	79	161-88-15 223-92-15	8/29/88 10/13/92	
Laurel Street			9/25/06	
Lawrence Street	32	Public Ordinances of 1975		
Lexington Drive	64	21-79-4 24-79-4 183-90-9	2/26/79 7/30/79 9/24/90 2/11/02	
Lindsay Court	33	Public Ordinances of 1975		
Lougee Court	66	31-79-11	12/17/79	
Lucerne Avenue	75	148-88-2	3/28/88	
Lyford Street	34	Public Ordinances of 1975		
Lyman Street	35	Public Ordinances of 1975		
Main Street	36	193-91-4 225-92-17 256-94-14	6/14/91 10/13/92 6/24/94 6/10/02 10/9/12 10/22/12	Multiple minor issues
McGrath Street	37		10/25/04	
Mechanic Street			1/23/17	
Merrimack Street			9/14/98	
Messer Street	38		3/26/01 6/14/10	
Mile Hill Road		19-78-7	11/28/78	See Academy Street 1a(2)
Moulton Street	63	20-78-8	12/26/78 9/12/16	Ordinance 20-78-8 is unclear since the entrance from Union Ave. was moved.
New Salem Street	39	Public Ordinances of 1975	3/8/99 6/9/14	
Oak Street	40	Public Ordinances of 1975		
Olive Place	59	7-77-2	5/31/77	
Opechee Street	41	Public Ordinances of 1975 221-92-13	8/17/92	
Parking Lots	42	173-89-8 224-92-16 268-95-7	11/27/89 10/13/92 6/26/95 12/23/13 11/29/21	18 spaces are leased out
Pearl Street	78	160-88-14 162-88-16	8/29/88 11/28/88	
Pendleton Road	80	288-92-20	11/17/92	
Pine Street	43	Public Ordinances of 1975		

Street Name	Chapter 50 Article V Section #	Ordinance # (or source document)	Counsel Action Date	Comments
Pleasant Street	44	190-91-1 256-94-14	1/15/91 6/13/94 3/8/99 1/26/09 9/24/18	The ordinance of 9/24/18 refers to a house number that does not exist. The ordinance of 3/8/99 is listed under New Salem St.
Provençal Road			11/13/18	
River Street	45	Public Ordinances of 1975	11/13/06	
Rowe Court	46	Public Ordinances of 1975		Numerous corrections
Strafford Street	47	Public Ordinances of 1975	8/26/13	
Summer Street	48	Public Ordinances of 1975		
Summit Avenue	72	96-84-10 131-86-16 172-89-7	11/26/84 10/27/86 10/30/89 10/9/07	
Tower Street (Weirs Beach)	49	Public Ordinances of 1975	6/14/21	
Tyler Street	50	Public Ordinances of 1975		
Union Avenue	51	Public Ordinances of 1975 188-90-14	11/26/90 8/24/98 5/10/04 9/25/06 9/14/20	Numerous corrections
Veterans Square	52	Public Ordinances of 1975 26-79-6	9/24/79	Numerous corrections See Depot Street
Warner Street	76	158-88-12	8/1/88	
Warren Street			11/23/98 11/08/99 2/13/17	
Washington Street	53	Public Ordinances of 1975		
Water Street	54	Public Ordinances of 1975		Minor issue
Weeks Street	81	274-95-13	8/28/95	
Wentworth Cove Road	55	Public Ordinances of 1975		
West Street	56	Public Ordinances of 1975		
Winter Street	57	Public Ordinances of 1975 193-91-4 259-94-17	6/14/91 10/31/94 7/28/03	

Academy Street - Section 1

a. No Parking:

(1) The even numbered side from Court Street to Hoyt Court.

(2) Both Sides from Beech Street to Mile Hill Road for a distance of 300 Feet

(Ordinance 19-78-7 of 11/27/78)

(3) There shall be no parking on the easterly side of Academy Street between Webster Street and Lincoln Street (Ordinance 227-92-19 of 11/17/92)

(4) The odd number side . . . from Court Street to the northern leg of Academy Square.

(4/12/21)

Arch Street - Section 2

a. Two Hour:

(1) The odd numbered side from Union Avenue to River Street with the exception of the forty-eight (48) feet from the corner of Union Avenue.

b. No Parking:

(1) The even numbered side from Union Avenue to River Street with the exception of the distance between a point twenty (20) feet from the corner of Union Avenue to a point at the westerly corner of apartment building numbered 10 and 12.

(2) The odd numbered side, forty-eight (48) feet from the corner of Union Avenue.

(Public Ordinances of 1975)

Avery Street - Section 3

a. No Parking:

(1) The even numbered side from Baldwin Street to Dixon Street. (Public Ordinances of

1975)

Baldwin Street – Section 4

a. Two Hour:

(1) The even numbered side from Avery Street to Pine Street. (Public Ordinances of 1975)

b. No Parking:

(1) The odd-numbered (westerly) side from Union Avenue to Pine Street.

(2) The even numbered (easterly) side from Union Avenue to 62 Baldwin Street. (Ordinance 263-95-2 of 2/13/95).

Belknap Street – Section 60

a. No Parking:

(1) The even-numbered side for a distance of one hundred (100) feet southerly from the intersection of Oak Street. (Ordinance 7-77-2 of 5/31/77)

(2) The even-numbered side for a distance of one hundred (100) feet northerly from the intersection of Oak Street. (Ordinance 9-77-4 of 8/29/77)

Bisson Avenue – Section 6

a. No Parking:

- (1) On the easterly side of Bisson Avenue from Strafford Street to Messer Street. (Public Ordinances of 1975)

Bowman Street – Section 7

a. No Parking:

- (1) The even numbered side. (Public Ordinances of 1975)

Bridge Street – Section 67

a. No Parking:

- (1) Both sides of the street. (Ordinance 36-80-5 of 4/29/80; amended by Ordinance 80-83-5 of 8/29/83)

Canal Street – Section 8

a. One-way:

- (1) Motor vehicles shall move in a northeasterly direction only. (Public Ordinances of 1975)

b. Two Hour:

- (1) The odd numbered side from Main Street to Beacon Street East. (Ordinance 154-88-8 of 5/31/88)

c. No Parking:

- (1) The even numbered side.
(2) One parking space on the odd numbered side immediately in front of building numbered 17. (Public Ordinances of 1975)

Carver Street – Section 65

a. No Parking:

- (1) Within the last twenty (20) feet of the highway layout. (Ordinance 25-79-5 of 8/27/79)

Centenary Avenue – Section 71

a. No Parking:

- (1) The even-numbered side. (Ordinance 83-83-8 of 9/26/83)

"Anecdotal evidence supports the fact that Centenary Ave. is already no parking on both sides . . . There was no public opposition at the meeting to making both sides No Parking." (Government Operations and Ordinances Committee memo of 9/26/16)

Chestnut Street – Section 62

a. No Parking:

- (1) The even-numbered side. (Ordinance 15-78-3 of 5/29/78)

Church Street – Section 9

b. One Hour:

- (1) The odd numbered side in front of buildings numbered 65-71.
- (2) The even numbered side from Howard Street to Davis Place except the designated bus stop. (Public Ordinance of 1975)

c. Two Hour

- (1) From the river on the southerly side of Church Street past building 65 to the no parking zone (Ordinance 169-89-4 of 7/31/89)

d. No Parking

- (1) The even numbered side from Main Street to Howard Street except where designated by painted parking spaces
- (2) The odd numbered side from main Street to River Street except where designated by painted parking spaces (Ordinance 50-81-4 of 7/27/81)

- (3) The odd numbered side of Church Street from Normandin Square west to the utility pole marked PSNH 20/15. (Ordinance 249-94-7 of 3/14/94)

e. Turning Movements

- (1) When proceeding west on Church Street at the intersection of North Main Street, all vehicles in the right-turn lane must turn right (Ordinance 22-79-2 of 5/28/79)

“ . . .place a Handicapped parking space at the corner of Davis Place and the first parking place on Church St..” (5/24/04)

“ . . . direct the Public Works Department to remove the white lines on the north side of Church Street and install No Parking signs on that side of the street and reposition them on the south side of the street in the spring to their specifications. The (*two-hour*) parking spaces will stop at the south side of Church Street at Simoneau-Paquette Funeral building.“ (11/28/05)

“ . . . No Parking be designated on Church Street on the odd numbered side from the intersection of River Street, easterly, for a distance of 130 ft. to the first approved (and delineated) parking space. (11/13/06) *The language “to the first approved (and delineated) parking space” suggests that the ordinance of 11/28/05 was changed prior to the passage of this ordinance.*

“ . . .change the parking limits for three (3) located in front of the buildings numbered 65 through 71, on the odd numbered side of the street, from (1) hour to 15 minutes . . .” (7/10/17)

Clairmont Street - Section 10

a. No Parking:

- (1) On the odd numbered side.

b. Two Hour:

- (1) On the even numbered side. (Public Ordinances of 1975)

Clark Avenue – Section 73

a. No Parking:

- (1) On the odd numbered side from the intersection of Union Avenue a distance of 100 feet to a point designated by a sign
- (2) On the even numbered side from the intersection of Union Avenue a distance of 100 feet to a point designated by a sign. (Ordinance 140-87-7 of 8/31/87)

Cleveland Place

"... ban parking on both sides of Cleveland Place from beginning to end." (6/12/00 and 8/14/00) *Cleveland Place is not an accepted street, therefore the City has no authority to establish parking regulations on it.*

Clinton Street - Section 11

a. No Parking:

- (1) On the odd numbered side, from the intersection of Union Avenue to the easterly corner of the post office building. (Public Ordinances of 1975) *The old post office was at 781 Union Avenue.*
- (2) No Parking on the north side of Clinton Street from the west boundary of 88 Clinton Street to the east end of the intersection of Clinton and Prospect Streets. (5/13/19).
- (3) No Parking zone on the right hand side (non guardrail) of Clinton street from the west boundary of 87 Clinton Street to the east end of the intersection of Clinton and Prospect Streets. (1/28/19)

b. Loading Zone:

- (1) There shall be a loading zone on the northeasterly side of the street, beginning at a point near to Union Avenue but sufficiently distant from the intersection so that use of the loading zone will not trip the intersection traffic light. The loading zone shall be the width of a parallel parking space and long enough to accommodate a tractor trailer truck. (Ordinance 217-92-9 of 7/13/92)

Cook Court – Section 12

a. No Parking:

- (1) The even numbered side from Court Street to the end of Cook Court. (Public Ordinances of 1975)
- (2) The odd-numbered side from Court Street to Monroe Street. (Ordinance 71-82-10 of 10/25/82)

Court Street – Section 13

a. No Parking:

- (1) No Parking on Court Street on both the even-numbered and odd-numbered side from the Belmont town line to the intersection of Main Street. (3/27/2018)

Cross Street – Section 14

a. No Turning:

(1) When proceeding north on Cross Street, right hand turns onto Fenton Avenue are hereby prohibited. (Public Ordinances of 1975)

Daisy Gardner Road

a. No Parking:

(1) No parking on both sides of Daisy Gardner Road from its intersection with Meredith Center Road to its intersection with Leighton Avenue. (4/8/19)

Davis Place – Section 15

a. One-way:

(1) Motor vehicles shall move in a north-westerly direction only along Davis Place as far as the northerly line of the lot on which the house numbered 38 is situated; the remaining portion of Davis Place shall be for two-way traffic.

b. Two Hour:

(1) The even numbered side.

c. No Parking:

(1) The odd numbered side to Hudson Street. (Public Ordinances of 1975)

Dewey Street – Section 16

a. No Parking:

(1) The odd numbered side.

(2) The even numbered side between the hours of 8:00 a.m. and 3:00 p.m. on days when the Laconia High School is in session. (Public Ordinances of 1975)

Dixon Street – Section 68

a. No Parking:

(1) The even-numbered side. (Ordinance 45-80-14 of 10/27/80)

Doe Avenue -- Section 17

a. No Parking:

(1) The even numbered side for a distance of two hundred (200) feet southwesterly from the intersection of Maple Street. (Public Ordinances of 1975)

Elliott Street – Section 18

a. No Parking:

(1) On either side. (Public Ordinances of 1975)

Elm Street – Section 19

a. Three Hour:

(1) The odd-numbered side from the westerly side of Railroad Avenue, so-called, to the easterly sideline of Park Street.

(2) The even-numbered side from a point forty (40) feet easterly of the easterly abutment of Elm Street bridge, so-called, and running easterly a distance of two hundred ninety-seven (297) feet to a point designated by a sign. (*continued on the next page*)

b. No Parking:

- (1) The even- numbered side from the westerly sideline of Union Avenue a distance of two hundred seventy (270) feet westerly to a point designated by a sign.
- (2) The even numbered side from the abutment of Elm Street bridge, so-called, a distance of forty (40) feet easterly to a point designated by a sign.
- (3) The odd-numbered side from the westerly sideline of Union Avenue to the westerly sideline of Railroad Avenue, so-called.
- (4) The odd-numbered side from the westerly sideline of Park Street to Fore Street.
- (5) Along either side of Elm Street bridge, so-called. (Ordinance 100-85-3 of 2/25/85)

c. No Parking **between 1pm and 4 pm on Monday through Friday:**

- (1) On the odd numbered side of Elm Street from Jefferson Street to the north boundary of 493 Elm Street.
- (2) On the even numbered side of Elm Street from Jefferson Street to the intersection of Hickory Stick Lane. (9/24/18)

Fair Street – Section 77

a. One-way:

- (1) Motor vehicles shall move in a westerly direction only from Academy Street to Court Street. (Ordinance 160-88-14 of 8/29/88)

Fairmont Street

“ . . . designate both sides of Fairmont Street between Elm Street and Belvidere Street a no parking area.” (8/12/19)

Folsom Street – Section 58

a. No Parking:

- (1) Both sides from the intersection of Pleasant Street thence in an easterly direction a distance of seventy-five (75) feet. (Ordinance 1-76-1 of 2/23/76)

b. No Parking **between 1 pm and 4 pm on Monday through Friday:**

- (1) On the odd numbered side of Folsom Street from the intersection of North Main Street to the intersection of Pleasant Street.
- (2) On the even numbered side of Folsom Street from the intersection of North Main Street to the intersection of Pleasant Street. (9/24/18)

Franklin Street – Section 20

a. *(1) repealed*

b. No Parking:

- (1) Between Elm Street and Fairmont Street and/or the extension thereof. (Ordinance 29-79-9 of 11/26/79)

Gale Avenue – Section 69

a. No Parking:

- (1) From 9 pm to 6 am on both sides from Lake Winnisquam to the extension of the westerly side of Winnicoash Street. (Ordinance 48-81-2 of 6/29/81)

Garfield Street – Section 21

a. No Parking:

(1) The odd numbered side from Champlin Street southerly for a distance of one hundred (100) feet.

(2) The odd numbered side from Webster Street northerly for a distance of fifty (50) feet.

b. 15 Minute:

(1) The odd numbered side from a point one hundred (100) feet southerly of the intersection of Champlin Street to a point fifty (50) feet northerly of the intersection of Webster Street. (Ordinance 163-88-17 of 11/28/88)

Gilford Avenue – Section 22

a. Two Hour:

(1) The odd numbered side from Union Avenue to a point opposite the southwest corner of the Sacred Heart Parish parking lot. *The Sacred Heart Parish Campus is located at 291 Union Ave..*

b. No Parking:

(1) The even numbered side from Union Avenue to Morrill Street.

(2) The odd numbered side in front of the Sacred Heart Parish hall parking lot. (Public Ordinances of 1975)

(3) The odd-numbered side from Highland Street to the projected sideline of Gilman Street (Ordinance 41-80-10 of 7/28/80)

(4) The odd-numbered side for a distance of seventy five (75) feet westerly from the intersection of Brook Street to a point designated by a sign. (Ordinance 95-84-9 of 11/26/84)

c. 30 Minute:

(1) The south side in front of premises numbered 55 and known as Randlett's Market, between the hours of 8:00 a.m. and 9:00 p.m. daily. (Public Ordinances of 1975)

No Parking at all times on the odd side of Gilford Avenue between Union Avenue and Highland Street (8/24/98)

Grove Street – Section 23

a. No Parking:

(1) From Union Avenue southeasterly a distance of one hundred (100) feet, both sides, except for the purpose of loading and unloading. *Note that Grove St. no longer intersects with Union Ave..* (Public Ordinances of 1975)

Hanover Street – Section 24 *(also known as Cross Street)*

a. No Parking:

(1) Both sides of the street. (Public Ordinances of 1975)

Harrison Street – Section 25

a. No Parking:

(1) The odd numbered side from Union Avenue to Mechanic Street. (Public Ordinances of 1975)

Harvard Street – Section 26

a. No Parking:

(1) The odd numbered side from Main Street to Pleasant Street.

(2) The even numbered side from Main Street to the northwesterly corner of lot on which is located building numbered 742 Main Street and known as Laconia Clinic. *The Laconia Clinic is located at 724 Main Street--not 742.* (Public Ordinances of 1975)

High Street – Section 27

a. No Parking:

(1) “. . . the odd and even numbered side of High Street be designated no parking from Union Ave. to Highland Street.” (5/14/18)

Highland Street – Section 70

a. No Parking:

(1) The even-numbered side for a distance of one hundred (100) feet both northerly and southerly from the intersection of Winter Street. (Ordinance 82-83-7 of 9/26/83)

. . . no parking on Highland Street from Crescent Street to Gilford Ave on the odd numbered side (8/9/10).

Hill Street – Section 74

a. No Parking:

(1) Both sides from Clinton Street to Cole Street. (Ordinance 143-87-10 of 10/26/87)

Howard Street – Section 28

a. One-way:

(1) Motor vehicles shall move in an easterly direction only from the easterly side of Riverside Court for a distance of three hundred and ninety (390) feet. (Public Ordinances of 1975)

Jackson Street -- Section 29

a. One-way:

(1) Motor vehicles shall move in a southerly direction only from Clairmont Street to Oak Street.

b. No Parking:

(1) The odd numbered side. (Public Ordinances of 1975)

Jefferson Street – Section 61

a. No Parking:

(1) The odd-numbered side for a distance of seventy-five (75) feet westerly from the intersection of North Street. (8-77-3 of 8/29/77)

Jewett Street – Section 30

a. Two Hour:

(1) The even numbered side. (Public Ordinances of 1975)

Lakeside Avenue – Section 31

a. 15 Minute:

- (1) One space directly in front of the door of the Weirs Beach Post Office.
- (2) Two spaces immediately northerly of the intersection of New Hampshire

Avenue. (Public Ordinances of 1975)

(3) Two (2) spaces on the water side immediately southerly of the crosswalk to the ramp of the Mt. Washington for “Official Use Only.” (Ordinance 168-89-3 of 7/31/89)

(4) One (1) space on the water side immediately northerly of the crosswalk of the Mt. Washington, embarking and disembarking only (Ordinance 167-89-2 of 4/25/89)

b. No Parking:

(1) Both sides from the intersection of Route 3 to Foster Avenue except where designated by painted parking spaces (Ordinance 50-81-4 of 7/27/81)

b. Handicapped Parking:

(1) Two (2) spaces on the water side immediately northerly of the embarking and disembarking space. (Ordinance 167-89-2 of 4/25/89) *This second section “b” was written as an amendment; it does not appear that it was intended to replace the preexisting section “b.”*

c. Two Hour:

- (1) Northerly from New Hampshire Avenue

d. Five Hour:

- (1) Southerly from New Hampshire

e. The enforcement of two-hour and five-hour parking by use of parking meters shall commence on Memorial Day and cease on the third Monday of September. (Ordinance 213-92-5 of 5/11/92)

No parking on the east side of Lakeside Avenue from the south end of the building at 329-347 to the intersection of Lakeside Avenue with Centenary Avenue. (8/14/17).

Lane Road – Section 79

~~a. One-way~~

~~(1) Motor Vehicles shall move in a westerly direction only from Parade Road to Meredith Center Road (deleted per Ordinance 223-92-15 of 10/13/92)~~

a. Trucks:

(1) No through trucks shall be allowed to move over said road. (Ordinance 161-88-15 of 8/29/88)

Laurel Street

...establish 3 new (1 hour) parking spaces on Laurel St., (right hand side heading easterly), establish “One Way” traffic on Laurel St. when entering on the Union Ave. end, and establish “No Outlet” access onto Laurel St. (with signs) from Mechanic St.. (9/25/06)

Lawrence Street – Section 32

a. No Parking:

- (1) The odd numbered side. (Public Ordinances of 1975)

Lexington Drive – Section 64

~~a. No Turning:~~

~~(1) When proceeding on Lexington Drive, right and left hand turns onto Lynnwood Road are prohibited from 3:00 pm to 5:30 pm. (21-79-1 of 2/26/79 and 24-79-4 of 7/30/79) (Repealed per Ordinance 183-90-9 of 9/24/90)~~

. . . remove the DO NOT ENTER signs from Lynnwood Rd. at Lexington Dr. and Shore Dr. at Lexington Dr. and relocate them at Lexington Drive after Astro before Algonquin and Penny Lane that state DO NOT ENTER from 3:00 P.M. to 4:00 P.M. Monday-Friday. (2/11/02) *Astro is a division of NH Ball Bearings; its street address is 155 Lexington Avenue.*

Lindsay Court – Section 33

a. No Parking:

- (1) On the odd numbered side. (Public Ordinances of 1975)

Lougee Court – Section 66

a. No Parking:

(1) Both sides of the street. (Ordinance 31-79-11 of 12/17/79) *Lougee Court is not an accepted street, therefore the City has no authority to establish parking regulations on it.*

Lucerne Avenue – Section 75

a. No Parking:

(1) Both sides from Route 11B to a point 50 feet northerly of the northerly sideline of the emergency vehicle driveway. (Ordinance 148-88-2 of 3/28/88). *Lucerne Avenue is not an accepted street, therefore the City has no authority to establish parking regulations on it.*

Lyford Street – Section 34

a. No Parking:

- (1) The even numbered side from Main Street to Messer Street.
(2) The odd numbered side from Main Street to a point one hundred and forty (140) feet easterly from the intersection of Main Street. (Public Ordinances of 1975)

Lyman Street – Section 35

a. One Hour:

- (1) The odd numbered side from Union Avenue to Butler Street. (Public Ordinances of 1975)

Main Street – Section 36

- a. One-way:
 - (1) Motor vehicles shall move in a northerly direction only from Beacon Street East to Church Street.
- b. 15 Minute parking shall be permitted:
 - (1) Immediately in front of 821 Main Street,
 - (2) In all marked parallel spaces between the intersection of Beacon Street East, and Mill Street, except as follows:
 - (a) There shall be four loading zones on the Westerly side between Mill Street and Beacon Street East. Each such loading zone shall be one parallel parking space in length and shall be separated from the nearest such loading zone by two parallel parking spaces.
- c. Two Hour parking shall be permitted:
 - (1) In all marked spaces lying southerly of Beacon Street East,
 - (2) In all marked angle spaces lying southerly of the stop sign at the intersection of Pleasant Street,
 - (3) On the odd-numbered, Northeasterly side from the intersection of Church Street to the railroad crossing,
 - (4) On both sides from the intersection of Pleasant Street to the Intersection of Church Street except as follows:
 - (a) There shall be a loading zone on the easterly side beginning at Canal Street and running toward Hanover Street, It shall end at a point sufficient to leave three parallel parking spaces between the end of the loading zone and Hanover Street.
 - (b) There shall be a loading zone on the easterly side beginning at the alleyway that lies Southerly of 653 Main street. It shall end at a point sufficient to leave two parallel parking spaces between the loading zone and the alleyway that lies southerly of the Laconia Tavern Building. *The Laconia Tavern Building is located at the corner of Church Street and Main Street.*
- d. There shall be No Parking:
 - (1) On both sides from the railroad crossing to Oak Street,
 - (2) On the even-numbered, Southwesterly side from the intersection of the curbs at Veterans Square northerly to the railroad crossing,
 - (3) On the even-numbered, Southwesterly side from the northerly line of the crosswalk immediately in from 300 Main Street, to Beacon Street East except for the designated parallel spaces designated and located as of 1 November 1992,
 - (4) On the odd-numbered Northeasterly side from the northerly line of the crosswalk immediately in from 300 Main Street, to Beacon Street East except for the designated parallel spaces lying immediately southerly of the entrance to 395 Main Street,
 - (5) On the odd-numbered, Northeasterly side from Joliet Street in front of buildings number 297, 299 and 301,
 - (6) On both sides from the intersection of Routes 106 and 107 to the driveway entrance to building numbered 147,
 - (7) On the even-numbered, Southwesterly side from the vacant lot adjacent to the building numbered 676 to the intersection of Church Street, a distance of about 50 feet.
- e. Vehicles proceeding north on Main Street shall be prohibited from turning left onto Oak Street.
- f. Vehicles proceeding south on Main Street and entering the left-turn lane at the intersection of Oak street must turn left onto Oak Street. *(continued on the next page)*

g. There shall be a stop sign located on Main Street at its southern intersection with Pleasant Street) (Ordinance 256-94-14 of 6/13/94) *This ordinance replaced the previous version of section 36 in its entirety.*

...remove the parking on the Easterly side of North Main Street in front of the American Legion (849 Main St.) between their two driveways (6/10/02)

... move the loading zone in front of the antique center (*assumed to be at 601 Main St.*) and to reposition the parking space to make it the proper length that is required. (10/9/12)

... keep the three parking spots as is and to make the loading zone smaller (10/22/12)

McGrath Street – Section 37

a. No Parking:

(1) On the even numbered side from the intersection of Clairmont Street to the driveway entrance to the school parking lot.

(2) On the odd numbered side for a distance of one hundred (100) feet southerly from the intersection of Opechee Street.

b. Two Hour:

(1) On the odd numbered side from the intersection of Clairmont Street to within one hundred (100) feet of the intersection of Opechee Street. (Public Ordinances of 1975)

Mechanic Street

No Parking, standing, or stopping on both sides of the road from the intersection of Union Avenue to the end of house at #29 Mechanic Street. (1/23/17)

Merrimack

No parking at all times zone be established on Merrimac Street from 84 Merrimac to Lovell Street on the easterly side of the street. (9/14/98)

Messer Street – Section 38

a. Two Hour:

(1) The odd numbered side from Church Street to the railroad crossing.

b. No Parking:

(1) The even numbered side from Church Street to the railroad crossing.

(2) Both sides from Irving Street to the intersection of Union Avenue (being on the even numbered side to the lot on which is situated the house numbered 324 Messer Street). (Public Ordinances of 1975)

...the parking spaces at the driveway of 23 Messer Street and the Driveway at 64 Church Street be designated as two hour parking (3/26/01)

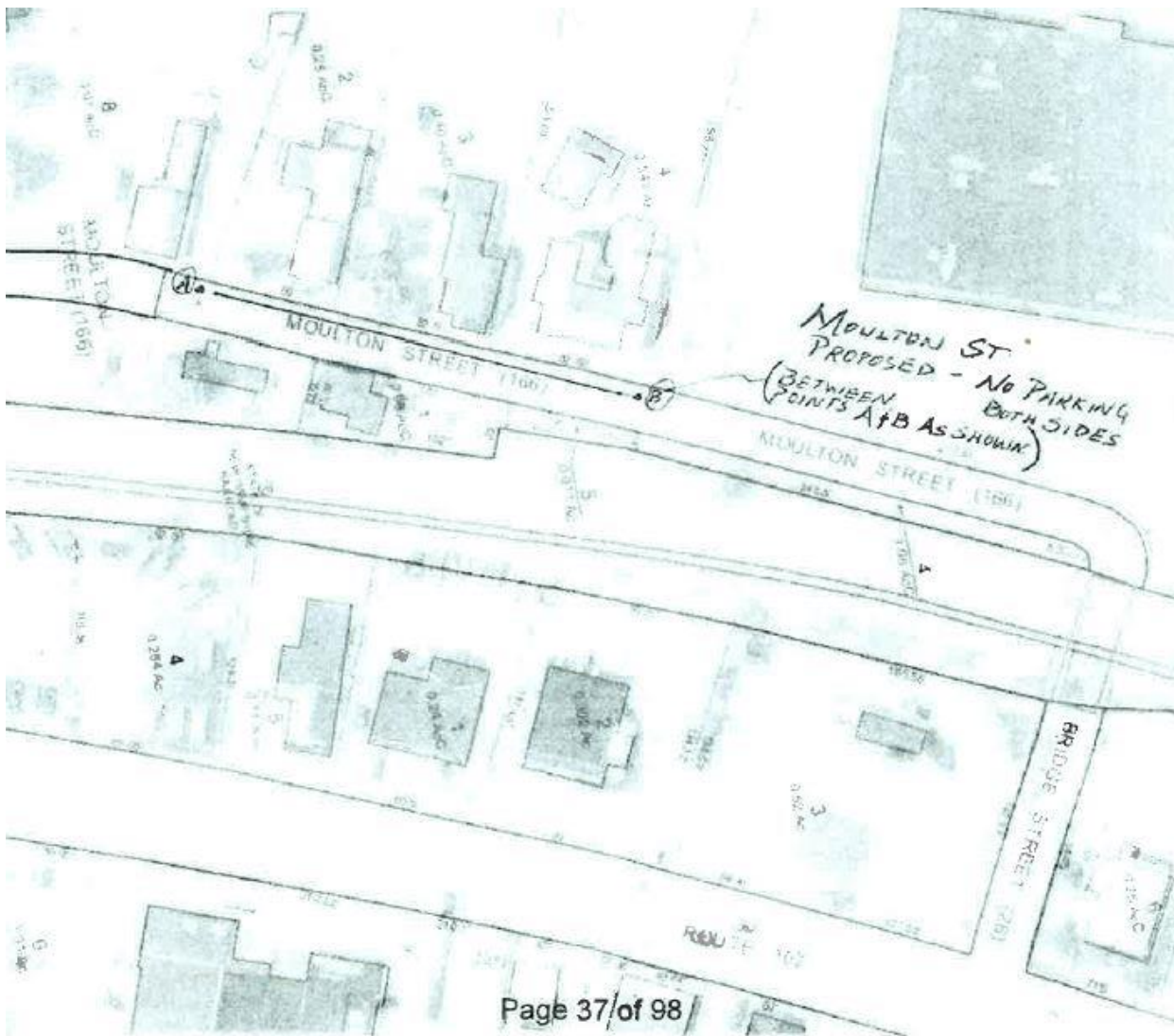
“ . . .add two parallel parking spaces in front of 242 Messer St . . .”. (6/14/2010) *Note that no time limit was specified*

Moulton Street – Section 63

a. No Parking:

(1) Both sides from the driveway entrance to the structure numbered 22 to Bridge Street. (Ordinance 20-78-8 of 12/26/78) *The 2010 911 Map shows house numbers 20 and 22 as one building. The roadway entrance from Union Ave. was at the north end of the street at the time this ordinance was written.*

... the “No Parking” zone be extended on both sides of Moulton Avenue to the entrance of the Opechee Inn and Conference Center between points A and B as shown on the map included with the agenda packet (*shown below*), (9/12/16)



New Salem Street -- Section 39

a. 15 Minute:

(1) Three parking spaces in front of the structure numbered 77-79 New Salem Street.

b. No Parking:

(1) The odd numbered side from Pleasant Street to the driveway entrance to the structure numbered 77-79 New Salem Street.

(2) On the railroad side, for a distance of fifty (50) feet, beginning at a point two hundred (200) feet southwesterly from Pleasant Street running a distance of fifty (50) feet in a southwesterly direction except for side unloading of freight cars. (Public Ordinances of 1975)

“ . . . establish a two hour parking limit boarding on Pleasant Street including the first handicapped parking space behind the railroad station on New Salem Street.” (3/8/99)

“City Manager Myers reviewed the recommendation with the Council. The proposal involves the area behind the Train Station in Veterans Square that a sunset provision with the ending of the Winter Parking ban. The Committee voted unanimously to recommend the parking behind the Train Station be divided between All-Day Parking and 2-hour parking. There was also agreement that continued meetings will be held to work on long term parking plans.

Councilor Lipman moved that the municipal parking spaces located on the south side of New Salem Street, between North Main Street and Pleasant Street be equally divided between all-day parking and 2-hour-limit parking, with all-day parking to the east of the center line and 2-hour-limit parking to the west of the center line. Appropriate spaces for those with a walking disability will also be marked on either side of the center line. “(6/9/14)

Oak Street – Section 40

a. No Parking:

(1) Both sides from Bungalow Court to McGrath Street.

(2) Both sides from Belknap Street to Messer Street. (Public Ordinances of 1975)

Olive Place – Section 59

a. One-way

(1) Motor Vehicles shall move in the following direction only: Enter between 30 and 32 Spring Street and exit between 36 and 40 Spring Street.

b. No Parking:

(1) Both sides of the street. (Ordinance 7-77-2 of 5/31/77)

Opechee Street – Section 41

a. No Parking:

(1) On the even numbered side from McGrath Street to Belknap Street.

b. Two Hour:

(1) On the odd numbered side from McGrath Street to Belknap Street (Public Ordinances of 1975)

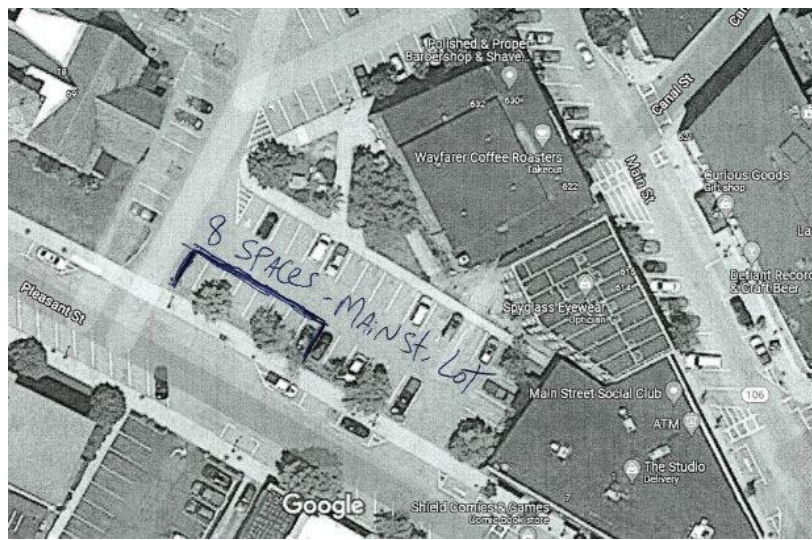
c. Motor vehicles shall not move in an easterly direction from Belknap Street to Messer Street. (Ordinance 221-92-13 of 8/17/92)

Parking Lots – Section 42

- a. Parking time limits at all city parking lots shall be determined at the discretion of the city council.
- b. There shall be NO OVERNIGHT PARKING in any city parking lots.
- c. No bicycles shall park in the parking garage located on Beacon Street East.
- d. Parking shall be permitted ALL DAY in all city parking lots except as limited in subparagraphs e and f below. (Ordinance 224-92-16 of 10/13/92)
 - e. Parking shall be limited to TWO HOURS
 - (1) In all of the lot adjacent to and northerly of Beacon St. West, including the row running along Beacon Street West and lying between the two most southerly access points. (Ordinance 268-95-7 of 6/26/95)
 - (2) Along the entire length of the row running along the street in the lot adjacent to and northerly of Beacon Street East, except for five spaces described in subparagraph f below,
 - (3) In all of the lot between Pleasant Street and North Main Street, and
 - (4) In the row abutting One Mill Plaza and lying between the Belknap Mill Building and City Hall in the lot adjacent to and northerly of Beacon Street East.
 - f. Parking shall be limited to FIFTEEN MINUTES
 - (1) In five spaces located in the row running along the street in the lot adjacent to and northerly of Beacon Street East. These five spaces lie immediately southerly of the lot entrance/exit located directly across from Hanover Street,
 - (2) In the four spaces facing the southerly entrance to City Hall.
 - g. Motor vehicles shall not exit from the northerly entrance of the lot adjacent to and northerly of Beacon Street West. (Ordinance 224-92-16 of 10/13/92)

Lease of 2 parking spaces in the Main Street municipal parking lot. (12/23/13) *The lease agreement for 2 parking spaces provided a place for a downtown business (now defunct) to store a dumpster.*

50-year lease of 10 parking spaces in the City Hall Lot and 8 parking spaces in the Main Street Lot. (11/29/21)





Pearl Street – Section 78

Ordinance 160-88-14 of 8/29/88 made Pearl Street one-way. It was repealed by Ordinance 162-88-16 of 11/28/88.

No Through trucks and /or trailers shall be permitted on Pearl Street. (Public Ordinances of 1975)

Pendleton Road – Section 80

a. No Parking

(1) There shall be no parking on the westerly side of Pendleton Beach Road between Route 11-B and Ashley Drive. (228-92-20 of 11/17/92) *Pendleton Road, formerly known as “Pendleton Beach Road,” starts at Route 11B, intersects with Ashley Drive and ends at the intersection of what is now called “Pendleton Beach Road.” Pendleton Beach Road intersects with neither Route 11B nor Ashley Drive.*

Pine Street – Section 43

a. Two Hour:

(1) The odd numbered side from Main Street to Baldwin Street.

b. No Parking:

(1) The even numbered side from Main Street to Baldwin Street.

(2) Both sides from the westerly lot line of house numbered 169 thence easterly a distance of two hundred (200) feet. (Public Ordinances of 1975)

Pleasant Street – Section 44

a. One-way:

(1) Motor vehicles shall move in a southerly direction only from Depot Street (*Veterans Square*) to Main Street.

(2) No motor vehicles shall enter Pleasant Street from the intersection of Pleasant Street and North Main Street.

b. TWO HOUR parking shall be permitted:

(1) The even numbered side from the railroad crossing to the intersection of Fenton Avenue with the exception of the area designated “No Parking,”

(2) On both sides from the intersection of Beacon Street West southerly to the intersection of Main Street, with the exception of areas designated “No Parking.”

c. There shall be NO PARKING:

(1) On the odd-numbered side from the railroad crossing to a point opposite the northwesterly corner of the lot on which is situated house numbered 185 Pleasant Street.

(2) The even-numbered side for a distance of 150 feet northerly from the northerly property line of the Boston and Maine Railroad.

d. There shall be a loading zone on the Northeasterly side beginning at the northerly entrance to the municipal parking lot and running toward the southerly entrance to the municipal parking lot. It shall end at a point sufficient to leave three parallel parking spaces between the end of the loading zone and the Southerly entrance to the municipal parking lot. (Ordinance 256-94-14 of 6/13/94)

Note that there is an ordinance (of 3/8/99) listed in the city council minutes under Pleasant St. It refers to a handicapped parking spot along New Salem Street. See the entry under New Salem Street for more information.

No Parking, with the exception of loading and unloading, is allowed between Gale Ave. and Oak Street. (1/26/09)

No Parking between 1pm and 4 pm on Monday through Friday:

(1) On the odd numbered side of Pleasant Street from the intersection of Tremont Street to the north boundary of 387 Pleasant Street.

(2) On the even numbered side of Pleasant Street from the southern boundary of 397 Pleasant Street to the intersection of the northern entrance into the Pleasant Street School. (9/24/18) *There is no building #397 on Pleasant Street.*

Provencal Road

No Parking Areas:

- The odd numbered side of the road from the southern property line of 47 Provencal Road to the north end of the City road.
- The even numbered side of the road from the southern property line of 47 Provencal Road to the north end of the City road. (11/13/18)

River Street – Section 45

a. Two Hour:

(1) The even numbered side from Church Street to Jewett Street.

b. No Parking:

(1) From Arch Street to Jewett Street and the odd numbered side of River Street from Church Street to Jewett Street. (Public Ordinances of 1975)

During the city council meeting of 11/13/10, the council decided to install parking signs. No changes were made to the parking ordinances.

Rowe Court – Section 46

a. No Parking:

(1) Both sides of Rowe Court from the intersection of Court Street to Woodward’s Garage, so-called. (Public Ordinances of 1975)

Strafford Street – Section 47

a. Two Hour:

(1) The odd numbered side from a point one hundred and twenty (120) feet from the intersection of Union Avenue to the intersection of the easterly sideline of Hudson Street.

b. No Parking:

(1) The even numbered side from Union Avenue to a point opposite the westerly intersection of Bisson Avenue.

(2) The odd numbered side from Union Avenue for a distance of one hundred and twenty (120) feet westerly. (Public Ordinances of 1975)

No Parking on Strafford Street from Hudson Street North on the even side to the south side of the driveway for 72 Strafford street for a total distance of approximately 100 feet . . . (8/26/13)

Summer Street – Section 48

a. Two Hour:

(1) The odd numbered side from Union Avenue to a point opposite the southeasterly corner of the lot on which is situated the building numbered 20 Summer Street. (Public Ordinances of 1975)

Summit Avenue – Section 72

a. No Parking:

(1) On the westerly side. (Ordinances 96-84-10 of 11/26/84 and 131-86-16 of 10/27/86).

Additionally, the ordinance of 10/09/07 authorizes the placement of “No Parking” signs along the west side of Summit Avenue.

(2) No parking on the easterly side from the dry hydrant to the center of the bridge (Ordinance 172-89-7 of 10/30/1989)

Tower Street - Section 49

a. No Parking:

(1) The northerly side during the period from June 15th to September 15th of each year. (Public Ordinances of 1975)

(2) ". . . designate the southerly side, from the intersection of Lakeside Avenue to a point 175 feet west of the intersection of Lakeside Ave and Tower Street a no parking area." (6/14/21)

Tyler Street - Section 50

a. No Parking:

(1) The odd numbered side, from Pine Street running in a northerly direction a distance of one hundred (100) feet. (Public Ordinances of 1975)

Union Avenue – Section 51

a. 15 Minute:

(1) The two parking spaces immediately adjacent to the Busy Corner Store, so-called, on Union Avenue and the two spaces immediately in front of the Simoneau Funeral Home on Union Avenue.

(2) The even numbered side from the intersection of Davis Place to the intersection of Strafford Street, except that parking shall be allowed on Saturdays from 4:00 p.m. to 9:00 p.m., and on Sundays from 7:00 a.m. to 9:00 p.m..

(3) The odd numbered side from the northerly boundary line of the High School property to the intersection of Lyman Street. (Public Ordinances of 1975)

~~(4) The two (2) parking spaces immediately in front of the Indian Head National Bank (now Fratellos) in Lakeport. (repealed by Ordinance 39-80-8 of 5/26/80).~~

The odd numbered side from a point one hundred and ten (110) feet southerly from the intersection of Clinton Street to a point sixty-five (65) feet from the southerly intersection of Clinton Street as designated by a sign (9/14/20)

b. 30 Minute:

(1) The odd numbered side, the seven (7) parking spaces beginning with the corner of Winter Street and proceeding northerly on Union Avenue to the entrance of the Sacred Heart Parish parking lot to be in effect daily except Sundays, from the hours of 8:00 a.m. to 10:00 p.m. (Public Ordinances of 1975).

(2) Three parking spaces immediately in front of 687 Union Avenue. (Ordinance 2-76-2 of 2/23/76)

(continued on the next page)

c. One Hour:

(1) The odd numbered side from the northerly corner of lot on which is situated building numbered 89 (J.H. Valliere Co.) to the northwesterly corner of lot on which is situated building numbered 117 (Vernitron), except where designated “No Parking.” .

(2) The odd numbered side from a point forty (40) feet from the intersection of Summer Street to Winter Street.

d. Two Hour:

(1) The odd numbered side from Spring Street to Summer Street.

(2) The even numbered side, the two (2) parking spaces in front of the structure numbered 230 – 234, southerly of the Simoneau Funeral Home on Union Avenue. *The funeral home is gone.*

(3) The odd numbered side from the northwesterly intersection of the driveway leading to the entrance of the Sacred Heart Parish parking lot to the intersection of Gilford Avenue.

(4) The even numbered side from the intersection of Strafford Street to the southeasterly corner of the lot on which is located building numbered 372 – 374.

(5) The odd numbered side from the southerly boundary line of the High School property to the northerly boundary line of the said High School property.

(6) The odd numbered side from the intersection of Lyman Street to the intersection of Walker Street.

(7) The even numbered side from the southeast corner of the lot on which is situated the building numbered 756 Union Avenue to Elm Street, with the exception of the designated bus stop. (Public Ordinances of 1975)

~~(8) The odd numbered side from a point three hundred (300) feet southerly from the intersection of Clinton Street to a point fifty (50) feet from the southerly intersection of Clinton Street as designated by a sign. (Ordinance 39-80-8 of 5/26/80).~~ The odd numbered side from a point three hundred (310) feet southerly from the intersection of Clinton Street to a point one hundred ten (110) feet from the southerly intersection of Clinton Street as designated by a sign. (9/14/2020)

e. No Parking:

(1) The odd numbered side from Main Street to the northerly corner of the lot on which is situated building numbered 89 (J.H. Valliere Co.).

(2) The even numbered side from the intersection of Main Street to the driveway for structure numbered 228.

(3) The odd numbered side from the northwest corner of the lot on which is situated the building numbered 117 to the intersection of Spring Street.

(4) The odd numbered side from Summer Street northerly for a distance of forty (40) feet to a point designated by a sign.

(5) The even numbered side from the southeasterly corner of the lot on which is located the building numbered 372, northerly for a distance of one hundred and fifty (150) feet.

(6) The odd numbered side from the intersection of Gilford Avenue to the southerly boundary line of the High School property.

(7) The odd numbered side from the northwesterly corner of the lot on which is located the building numbered 521 to the southwesterly corner of the lot on which is located building numbered 547.

(8) The even numbered side from the northerly side of Elm Street northerly for a distance of six hundred (600) feet. (Public Ordinances of 1975)

(9) The odd-numbered side from a point fifty (50) feet southerly from the intersection of Clinton Street to the driveway entrance to the structure numbered 855. (Ordinance 39-80-8 of 5/26/80).

(10) The odd numbered side for a distance of six hundred and thirty-five (635) feet southerly from the southerly side of Stark Street. (Public Ordinances of 1975)

(11) on both sides from Black Brook Bridge northerly to the Gilford town line (Ordinance 147-88-1 of 1/19/88)

(12) The odd numbered side from the southerly sideline of Gilford Avenue southerly for a distance of 130 feet.

(13) The even numbered side starting at a point 70 feet from the northerly side of Strafford Street northerly a distance of 4 feet (intended for handicapped access). (Ordinance 188-90-14 of 11/26/90)

“ . . . eliminate three 15 minute parallel parking spaces on the odd numbered side of Union Ave., immediately south of Laurel St., . . . (9/25/06)

“ . . . a no parking at all times zone be established on both the even and odd side of Union Avenue between Elm Street and Clinton Street, and the Gilford Town Line.” (8/24/98)

Veterans Square - Section 52

a. One-way:

(1) Motor vehicles shall move in a westerly direction only on the northerly side of the traffic island situated at the junction of Veterans Square and Pleasant Street.

(2) Motor vehicles shall move in an easterly direction only on the southerly side of the traffic island situated at the junction of Veterans Square and Pleasant Street. (Public Ordinances of 1975)

(3) Motor vehicles shall move in an easterly direction only over the way between the park and the railroad tracks. (Ordinance 26-79-6 effective 9/24/79) *This ordinance is unclear given the current location of the park.*

b. Two Hour:

(1) All portions of Veterans Square from Pleasant Street to Main Street except the two one-hour and the no-parking spaces adjacent to the building numbered 676 Main Street, and on the northerly side, the spaces designated 15 minute parking, bus stop and taxi stand.

c. Taxi Stand: (1) The first three (3) parking spaces westerly from the bus stop located at the northwesterly intersection of Main Street and Veterans Square. *The bus stop and taxi stand no longer exist.*

d. 15 Minute:

(1) On the northerly side, from the intersection of Main Street, westerly a distance of forty (40) feet.

e. No Parking:

(1) Both sides of the way which runs westerly from Main Street north of the monument and south of the railroad platform, extending one hundred and thirty-six (136) feet from the west side of the Main Street sidewalk westerly and southerly along the curb on the south side of said way and extending one hundred and fifty-four (154) feet from the west side of the Main Street sidewalk westerly along the curb on the northerly side of said way.

f. One Hour:

(1) Two parallel parking spaces adjacent to (and westerly of) building numbered 676 Main Street. (Public Ordinances of 1975)

Warner Street – Section 76

a. One-way:

(1) Motor vehicles shall move in southerly direction only from Tower Street to Route 3. (Ordinance 158-88-12 of 8/1/88)

Warren Street

A no parking sign be installed on the west side of Warren Street from the junction of Pine Street at a distance of 50 feet.” (11/23/98)

The “No Parking here to corner” sign be moved to a distance of 150 feet from the corner. (11/8/99)

No Parking on both sides of Warren Street form the easterly property sideline of house 49 to the westerly sideline of house 86. (2/13/17)

Washington Street – Section 53

a. No Parking:

(1) The even numbered side from the intersection of Fairmont Street northerly to the southeasterly corner of the lot on which is situated the building numbered 56. (Public Ordinances of 1975)

Water Street – Section 54

a. No Parking:

(1) On either side of the remainder of Water Street, from Beacon Street West westerly to the Boston and Maine railroad’s main line crossing.

b. One Hour:

(1) Parallel parking only shall be allowed on the odd numbered side of Water Street between a point twenty-five (25) feet easterly of the easterly track of the Boston and Maine spur line to a point one hundred and fifty (150) feet easterly of said track, which point is intended to be the westerly side of the alley adjacent to the Laconia Malleable Iron Co’s office building. (Public Ordinances of 1975) *This is in conflict with State of NH drivers’ manual which states that parking is not allowed within 50 feet of the nearest rail of a railroad crossing.*

Weeks Street – Section 81

a. No Parking

(1) There shall be no parking on either side. (Ordinance 274-95-13 of 8/28/95)

Wentworth Cove Road – Section 55

a. No Parking:

~~_____ (1) Both sides of the street. (Public Ordinances of 1975) *Note that the western 300 feet of Wentworth Cove Road is a private road.*~~

~~" . . . no parking area on both sides of Wentworth Cove Road. On the odd numbered side of the road the no parking area begins at the southern boundary of 65 Wentworth Cove Road to the northern boundary of 91 Wentworth Cove Road. On the even side of the road it should extend from the southern boundary of 66 Wentworth Cove Road to the northern Boundary of 88 Wentworth Cove Road." (12/14/20) (repealed 4/26/21)~~

~~" . . . designate the east side (odd numbered side) of the road a no parking area from the northern edge of the Summit Ave right of way to the southern edge of the Woodvale Road right of way." (4/26/21)~~

West Street – Section 56

a. No Parking:

(1) The odd numbered side. (Public Ordinances of 1975)

Winter Street – Section 57

a. No Parking:

(1) The odd numbered side from Union Avenue to Autumn Street. (Ordinance 159-88-13 of 8/29/88)

b. 15 Minute

(1) One parking space on the even numbered side at a point forty (40) feet easterly from the intersection of Union Avenue to the first driveway. (Public Ordinances of 1975) *While the 1988 supplement does not show this ordinance, it was not deleted by Ordinance 128-86-13 of 7/28/86 like the original part a. Furthermore, the single parking space is referred to by part c below.*

c. Two Hour:

(1) The even numbered side from Union Avenue to the centerline of Autumn Street extended except the one parking space nearest Union Avenue. (Ordinance 159-88-13 of 8/29/88)

d. Two-Way:

(1) Traffic on Winter Street shall be two-way along its entire length. Motor vehicles moving onto Union Avenue from Winter Street may make a right turn, but shall be prohibited from making a left turn or proceeding straight onto Church Street. (Ordinance 193-91-4 of 6/14/91)

e. Trucks

(1) No through trucking or truck deliveries during the hours of 8:00 p.m. to 8:00 a.m. (Ordinance 159-88-13 of 8/29/88, reinstated on 7/28/03)

f. No Parking

(1) No parking on the north side of Winter Street beginning at its intersection with Highland Street to a point fifty (50) feet west of the intersection. (Ordinance 259-94-17 of 10/31/94)